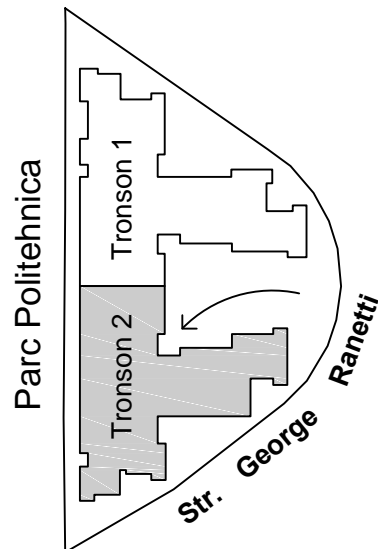
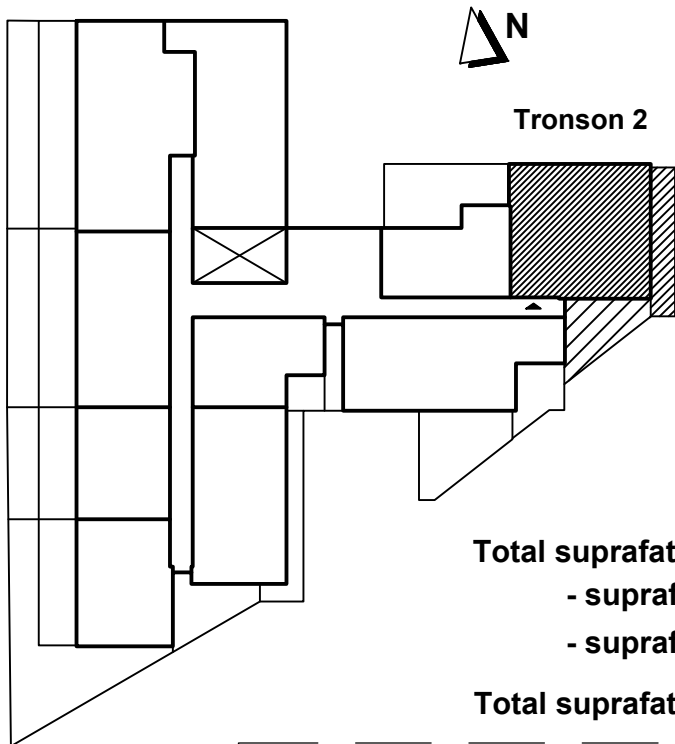


# Apartament 3 camere - 2010, parter, tronson 2 Str. George Ranetti, Nr. 2-8, Sector 6



**Total suprafata construita apartament = 132.80 mp, din care:**  
 - suprafata construita terasa = 18.20 mp  
 - suprafata construita gradina = 21.60 mp  
**Total suprafata utila apartament = 110.80 mp**

